



Smart Navigator for Mariners & Sailors

Have you contemplated buying different models of marine GPS to meet your navigational requirements? Are you stuck with not being able to mark your position of interest or fishing zone? Or send the same to your friends and colleagues?

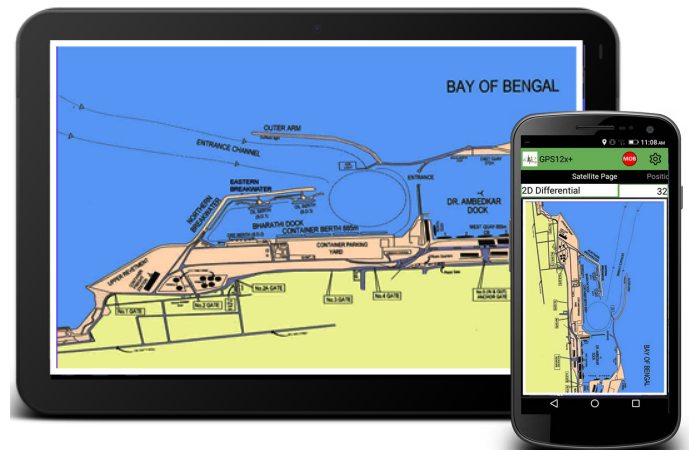


Become a smart mariner now and experience the power of advanced navigation and positional information with MysmartGPS12X+. The 12X+ comes with open sea maps with the ability to input symbols and way points by the users. Users can also use its built in GUI for navigation guidance to your point of interest or destination.

For a fraction of the cost of an Hardware based Marine GPS enjoy the new world smartnav GPS connected ship experience everyday with MysmartGPS12X+ (when in 3G/4G coverage area). MysmartGPS12X+ is a powerful geo information hub that keeps the navigator informed of position, way points to go to and other safer navigation tools including *weather information* - a feature not available in any hardware GPS. MysmartGPS12X+ delivers valuable information, to the navigator harnessing the power of mobile smartphone computing and communications with the best of GPS & A-GPS* to bring greater accuracy than normal hardware based GPS devices.

OpenSeaMap provides seafaring maps with nautical and tourism information that would interest sailors. This includes beacons, buoys and other seamarks, port information, repair shops, ship supplies and much more,

- More accurate GPS fix than regular hardware based GPS (due to A-GPS and cell corrections)
- User-selectable waypoint symbols and comments enhance map display information
- Your movement on the screen is smoothed by very fast responsive refresh
- Heading and Position Refreshed every second
- Preloaded with Open sea maps for offline
- Create your own points of interest or fishing zone
- Man Over Board functions

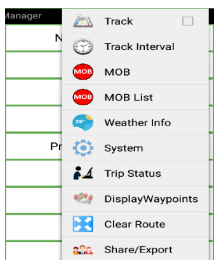


Features:

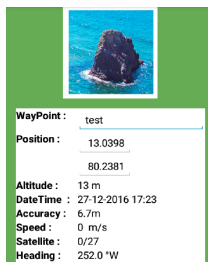
- Auto track log
- Preloaded marine maps
- Online /Offline maps
- Photo navigation
- Share/export data
- MOB (Man Over Board)
- Weather info
- Proximity Alerts
- and more...

Specification:

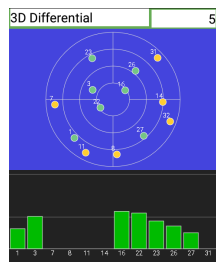
Display Colour	- Multi screen Compatibility
User Interface	- User Friendly
Camera Feature	- Available
Interface	- USB
Base Map	- Live map With Satellite and Terrain Image
Preloaded maps	- Open Sea map / Ourx map
Offline Map	- Yes
Online Map	- Yes
Data Sharing	- Easy to Share
Key Function	- Touch
Waypoints	- UNLIMITED
Routes	- UNLIMITED
Track log	- UNLIMITED
Picture Viewer	- Yes
Mark Icon	- Multi Icon (Add On Waypoint)
Photo Navigation	- Yes
MOB	- Yes
Weather Info	- Yes
Support Signals	- GPS, AGPS, GPRS, GLONAS, BEIDU, EGNOS, GAGAN



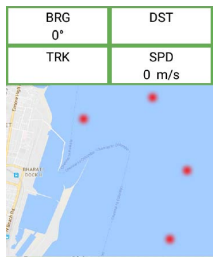
Quick dropdown menu for easy access to settings



Detailed waypoint menu to know your Location with map attributes



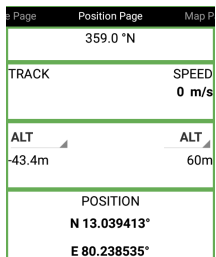
Satellite page view enable to find fix of GPS signals



Preloaded map is added advantage to Navigate to your onshore destination



Offline seamap to find your exact location while sailing



Horizontal Compass to get your Bearing / Headings on the go

and more...

Features Similar to:

- * Garmin - 128, 152H, 580 and more...
- * Furuno - GP32, GP39

- Garmin is a trademark of GARMIN Co., Ltd. USA
- Furuno is a trademark of FURUNO Electric Co., Ltd. Japan

MySmartGPS vs Other GPS Brands

Features	MySmartGPS 12X+	Other Marine GPS
Display type	Colour Display With Multi screen size	Black and White & color
User Interface	User Friendly	Limited access
Camera	Yes	No
Antenna	Built in Device	External only
Interface	USB	RS232
Base Map	Live map With Satellite and Terrain Image	In select models only
Preloaded maps	Yes	None
Offline Map	Yes	In select models only
Online Map	Yes	None
Data Sharing	Easy to Share	None
Option to store data on sd cards	Yes	In select models only
Waypoints	UNLIMITED	LIMITED
Routes	UNLIMITED	LIMITED
Track log	UNLIMITED	LIMITED
Picture viewer	Yes	No
Mark icon symbol	Yes	Yes
Add image/ photo while marking	Yes	No
Photo navigation	Yes	No
Social media share	Yes	No
Web service	Option available	No
A-GPS, GPS/GLONASS	Support	No A-GPS
Wifi	Support	No
Auto routing	Yes	Optional
Offline map support	Open sea map (optional)	In select models only
Notifications	Yes	Yes
Man Over Board	Yes	Yes
Real time Weather info	Yes	No
Export to Google	Yes	No