



ELEKTRONIK LAB
SKY IS NOT THE LIMIT

AIS infobox

AIS on the Go for Emergency & Tactical operations

Why a Mobile AIS?

Various operations in and around coastal areas requires the need of a portable solution to monitor AIS signals from ships in the area or transmit AIS signals from remote location. The AISinfobox from Elektronik lab is a shock proof rugged hand portable "AIS solution in a box". The infobox comes in 4 variants tailored to meet requirements from various segments that need mobile AIS Rx or Tx data for operational requirements.

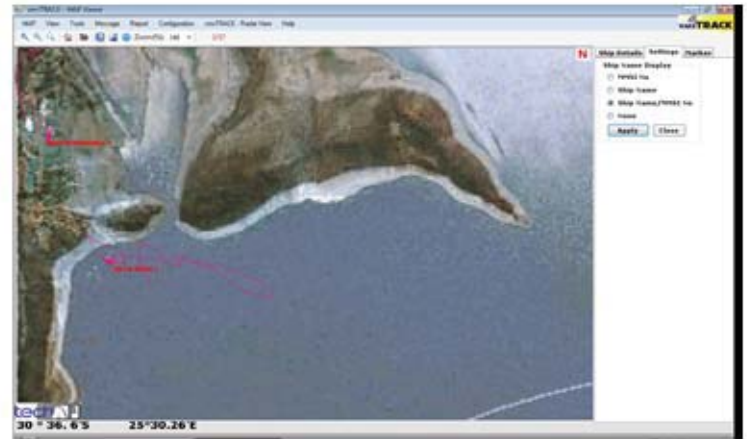
From surfacing submarines to scuba diving teams or sea pilots to SAR helicopters the AISinfobox provides mobile transmit & or receive options. All the AIS data received from the neighborhood is output to a choice at compatible to the unit. Housed in a water & dust resistant portable sturdy case, this integrated solution is ideal for any tactical operations on water, around shore areas or by SAR crew on board helicopters. This self contained unit includes a high sensitive AIS receiver or transceiver from Weatherdock of Germany, rechargeable batteries, military grade connectors all packed in a briefcase.

The AISinfobox is designed for the mobile usage of AIS data. The box has an option for using inbuilt power pack or by means of an external power source. The box has exterior plugs for GPS and VHF antennas. The internal AIS unit has an option for a wireless presentation interface, transmitting the data to a laptop or an android tablet or smart phone installed with our MDAonline software with requisite maps.

The AISinfobox receives AIS data within the VHF range of up to approximately 25 miles via the connected VHF antenna. The received data can be interfaced with a track plotter, or a wireless device running on windows or android. The optional wireless presentation interface is available for ease of installation and integration into mobile devices and electronic charts. By connecting the external GPS antenna, the AIS unit receives its own GPS position.

Grab & Go setup

AISinfobox is a grab & go design that is very easy to deploy and operate. The box contains all the necessary interfaces and connectors. Flip open the box and all the switches, interfaces and status lights indicating GPS & battery status are handy. No configuration is needed. The unit is powered by AC 220Volts or DC 12 – 32 v



For whom?

- Helicopter Rescue-Units (approx range of over 100 Nm*)
- Helicopters flying in oil platforms or offshore wind parks
- Beachside monitoring of sea rescue operations (25Nm)
- Marine Commandos
- Special ops on the coast
- Landing crafts and amphibious vehicles
- Surfacing submarines
- Sea pilots
- Diving groups (to be used in junction with Divepos)
- Regattas
- Temporary berth jelly's
- Standby device for port
- Air fields to airborne AIS
- Aircraft Ca

* depends on the height of the antenna

A must have equipment in emergency operational kits of Marine swat teams, landing parties, Submarines, marine disaster teams, SAR helicopters

Variants available

AIS Rx 101disp

- This is an AIS receive only model that receives all AIS signals in the vicinity and outputs the same to a Garmin GPS track plotter. (Interfaces to other displays or models is possible)



AIS Rx 102tab

- This is an AIS receive only model that receives all AIS signals in the vicinity and outputs the same via a wireless presentation interface to any mobile device running our MDAonline software.
- This can be an android tablet or smart phone or simply a PC laptop.



AIS TxRx B203disp

- When you require to transmit AIS signals from a remote location or on the move this is the option you need. This is a transmit & receive solution and outputs received AIS signals to a Garmin GPS track plotter. The transmit mode is Class B. (Interfaces to other displays or models is possible)



AIS TxRx B203tab

- When you require to transmit AIS signals from remote location or on the move this is the option you need. This is a transmit & receive solution and outputs received AIS signals to a wireless presentation interface to any mobile device running our MDA online software. This can be an android tablet or smart phone or simply a PC laptop. The transmit mode is Class B.



AIS Receiver / Transciever details

- > Integrated with GPS receiver
- > 1 transmitter, 2 receiver (if Tx + Rx)
- > Rx sesitivity: -107dBm minimum, typically -112dBm
- > Tx power output: max 4W Class B
- > NMEA telegram type: VDM
- > maximum number of Wifi users: 1
- > Adapter VFH antenna: 50 Ohm, SO2239
- > Adapter GPS antenna: 50 Ohm, BNC
- > Cabin mounting, IP60, -25°C - 55°C

About Elektronik Lab

- Specialised in ISR (intelligence, Surveillance Reconnaissance)
- 10 years of experience in system integration and system maintenance
- Satcom services for over 125 aircrafts
- Over 3000 AIS (Marine & Aero) installed base
- End to End Tsunami detection & warning solutions
- Elab's Domain awareness AIS networks in use in 3 countires
- Experts in cloud based tracking solutions (AIS, Satcoms, GPRS, Acoustics)

ELEKTRONIK LAB India (P)Ltd, 10A, Masilamani street, T. Nagar,
Chennai - 600017. Ph: 91-044-24336953, e-mail: info@elektroniklab.com,
www.elektroniklab.com



TACTICAL AIS ON THE MOVE

